

WCC III

7. TenantReport.exe Program

TABLE OF CONTENTS

SECTION 7: TENANTREPORT.EXE PROGRAM

How to Start or Run the TenantReport.exe Program	7-1
Running the Program	7-2
Printing Tenant Override Reports	7-3

SECTION 7: TENANTREPORT.EXE PROGRAM (SS5025)

The TenantReport.exe program is used in conjunction with the Tenant Override program. The TenantReport.exe program generates a monthly / yearly paper report that keeps track of individual end user Tenant Overrides with start times, dates, and a current run time, that are generated by the each and every end user Tenant Override program. This is mainly used for after hours billing of equipment usage, and the timed usage of said equipment is then kept track of for each and every tenant in this manner.

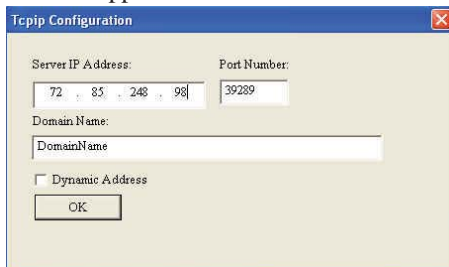
How to Start or Run the TenantReport.exe Program (SS5025)



The TenantReport.exe shortcut icon should have been installed on your WCC III front end computer desktop with the WCC III Installation Software CD. This WCC III Installation Software CD is WattMaster Controls Part # DM1WC011-01X.

To start the TenantReport.exe program, *double-click* the left mouse button on the Shortcut Icon located on the Windows desktop.

After a short period of time, and this time period is dependent upon the CPU speed of your Windows based computer and the speed of your IP connection to the internet, the *WCC III Connection Dialog Box* will appear.



Server IP Address:

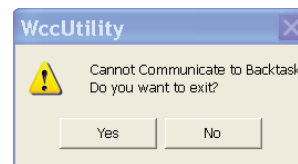
This is the static IP address of the WCC III – MCD. An IP Address is like a phone number on the world wide web. The IP address for the WCC III - MCD must be static (does not change) as opposed to Dynamic (constantly changing). This static IP Address must be provided by your internet service provider. (A static IP address is the preferred IP connection method for the WCC III system to function.) If you actually know what the static IP address of the WCC III - MCD that you wish to connect to, please enter it here in the Server IP Address field.

You can use a Dynamic IP Address with the WCC III - MCD, but you must then have what is called a static “Host Name”. This static “Host Name” must then be provided by your internet service provider and is limited to 58 total characters.

Port Number:

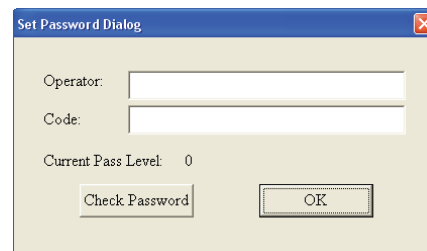
The WCCUtility.exe program opens a two-way, secure communications port that then allows for communication between WCC III - MCD and the TenantReport.exe program that is running on the WCC III front end computer. This IP Address connection is done on a higher address port number than normal (WCC III connection is port number 39289) to help reduce the risk of computer hacking.

By *selecting* <OK>, the Tenantreport.exe program will now start to connect to the selected WCC III – MCD via this selected IP address connection. It should bring up the *Tenant Report Set Password Dialog Screen*. If the IP address connection fails to connect to the WCC III – MCD, then another small dialog box window will appear. This is the *Cannot Communicate to Backtask Dialog Box*.



If you *click* <Yes>, you will exit the Tenantreport.exe program. You will have to figure out why you cannot connect to the WCC III – MCD via the IP address connection.

If you *click* <No>, you will not exit the Tenantreport.exe program, but instead you will be connected to the *Tenant Report Set Password Dialog Screen*. This is not an actual IP connection, but rather a “dummy” Tenant Report Set Password Dialog screen. Once you *click* <OK>, you will be connected to the *WCC III Tenant Report Screen*. This connection to the WCC III - MCD is not an actual IP connection, but rather a “dummy” Tenant Report Screen with no values, allowing you to view and see what the actual Tenantreport.exe screen will look like – minus any data.

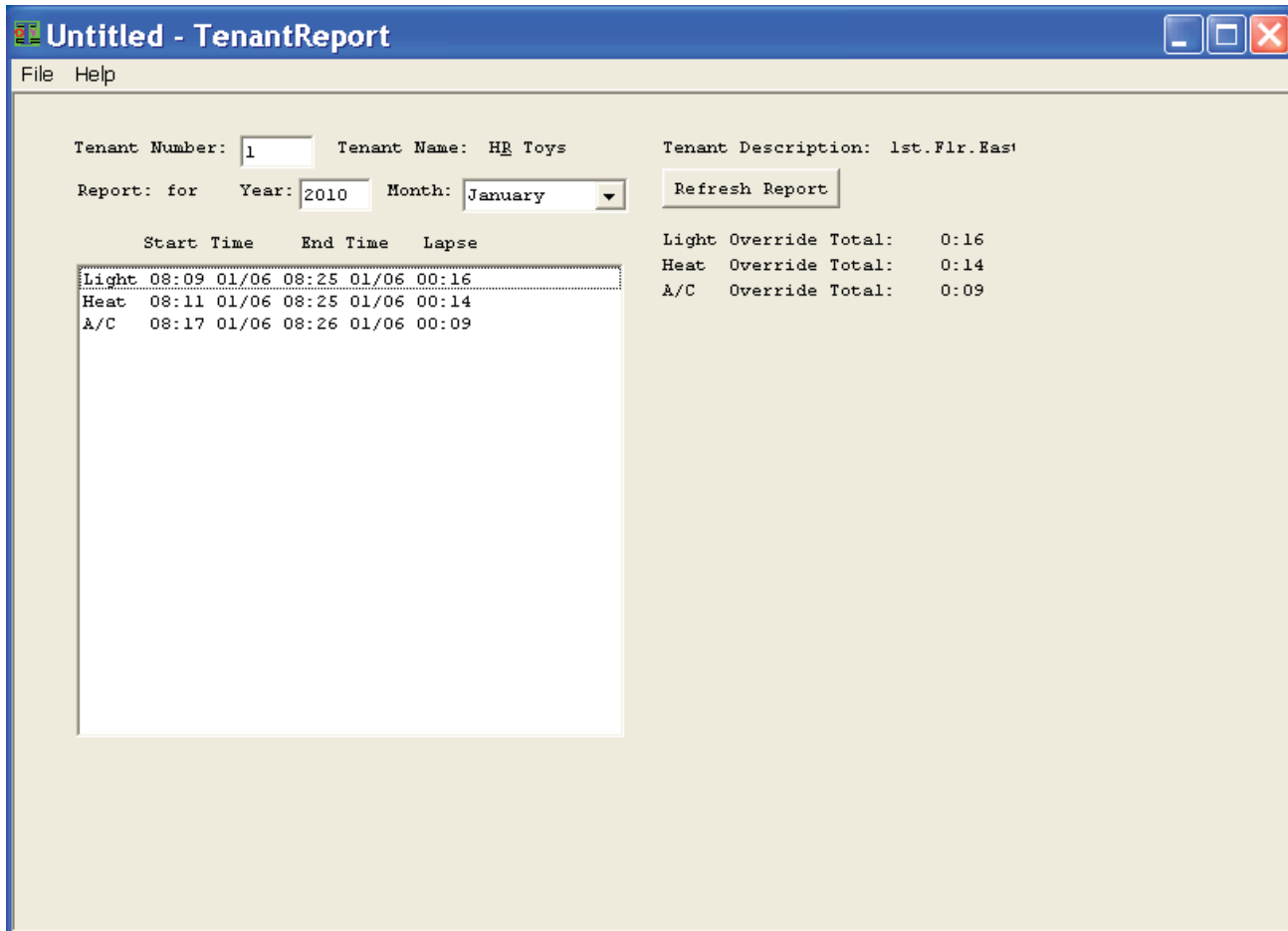


In the *Set Password Dialog Screen*, enter an “Operator:” identification and a “Code:” or password equal to at least a pass level 0 that has been previously set up on

the *WCCIII System Parameter – Operator Code Screen*. (See the Operator Code Screen of the System Parameter Screen in Section 3 for information on setting up Operator Codes.) *Click* <Check Password>. If the “Current Pass Level:” stays at 0 or higher (1, 2, or 3), then *click* <OK>. By *selecting* <OK>, the Tenantreport.exe program will now start to connect to the selected WCC III – MCD via this selected IP address connection. It should bring up the *TenantReport Screen* within a new window. If the “Current Pass Level:” changes to –1 then you do not have access to the WCCIII – MCD. If you do not have access to the WCCIII – MCD and you *click* <OK> then this connection to the Tenantreport.exe program is not an actual IP connection, but rather a “dummy” Tenant Report screen window with no values.

7. TENANTREPORT.EXE SCREENS

Running the Program



The WCC3.exe program has a Tenant Override setup screen that also has to be filled out in order for the TenantOverride.exe and TenantReport.exe programs to function. Please make sure that the *Tenant Override Setup Screen(s)* have been filled out completely for each and every tenant that plans on using the Tenant Override program option. See Section 3 for further details on how to setup the WCC3.exe *Tenant Override Setup Screen(s)*.

Tenant Number:

You can have up to 500 separate Tenant Overrides on the WCC III system. This screen defaults to number 1, and if you change this Tenant Number, you must remember to click the <Refresh Report> button to update the data to current values on the *Tenant Report Main Screen*.

Tenant Name:

Limited to 8 characters – This associated name directly comes from the WCC3.exe program – specifically from the *Tenant Override Setup Screen(s)*.

Tenant Description:

Limited to 12 characters – This associated name directly comes from the WCC3.exe program – specifically from the Tenant Override Setup Screen(s).

Report for Year_____Month_____:

This field allows you to select the month and year you wish to retrieve the tenant override data from. After selecting the desired year or month or both, you must remember to click the <Refresh Report> button to update the data to current values on this *Tenant Report Main Screen*.

Start Time_____End Time_____Lapse Time_____:

The Start Time (with month/day of month), End Time (with month/day of month), and Lapse Time portion of the *Tenant Report Main Screen* displays the actual Start, End, and Lapse time for each one of the end user's timed override that the end user has selected with the TenantOverride.exe program. This data cannot easily be erased, or deleted from this screen. The data is stored on the WCC III - MCD's solid state hard drive.

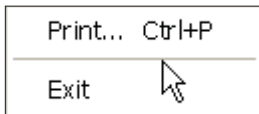
Printing Tenant Override Reports

Light Override Total:
Heat Override Total:
A/C Override Total:

The Light, Heat, and A/C group override total portion of the *Tenant Report Main Screen* displays the actual runtime totals of each one of the three override groups of overrides of the end user's timed override that the end user has selected with the TenantOverride.exe program.

Printing Tenant Override Reports

You have the option of printing the Tenant Override Reports to the windows default printer. At the very top of the *Tenant Report Main Screen* there is a <File> button that has a pull down menu with the following options:



Select the <Print...> option from this pull down menu to send the currently selected Tenant with the desired month / year of the Tenant Override Report print job to the windows default printer.

The Tenant Override Report will be plain text only and a sample is listed below:

Tenant Override Report
Tenant Name: H&R Toys
Tenant Description: 1st.Flr.East
Light 08:09 01/06 08:25 01/06 00:16
Heat 08:11 01/06 08:25 01/06 00:14
A/C 08:17 01/06 08:26 01/06 00:09
Light Override Total: 0:16
Heat Override Total: 0:14
A/C Override Total: 0:09

It is possible to capture this text in a PDF printer output with a "PDF Printer" and then use this data in a Microsoft Word type document to send to the end user for monthly billing of after hours use of equipment.

7. TENANTREPORT.EXE SCREENS

Running the Program
