

# WCC III

## 6. Tenant Override Program

---

---

# TABLE OF CONTENTS

---

## SECTION 6: TENANT OVERRIDE PROGRAM

WCC III Installation Software -  
DM1WC011-01X..... 6-1

WCC III Tenant Override Installation  
Software - DM1WC013-01X..... 6-3

How to Start or Run the  
TenantOverride.exe Program ..... 6-4

Tenant Override Request..... 6-5

## SECTION 6: TENANT OVERRIDE PROGRAM (SS5024)

The *Tenant Override Program* provides a means for an end user, or Tenant to override specific WCC III control point(s) via the internet with a very simplistic interface that WattMaster Controls has developed.

This is mainly used for after hours billing of equipment usage, and the timed usage of said equipment is then kept track for each and every tenant in this manner. A separate secure program is then used to retrieve this data.

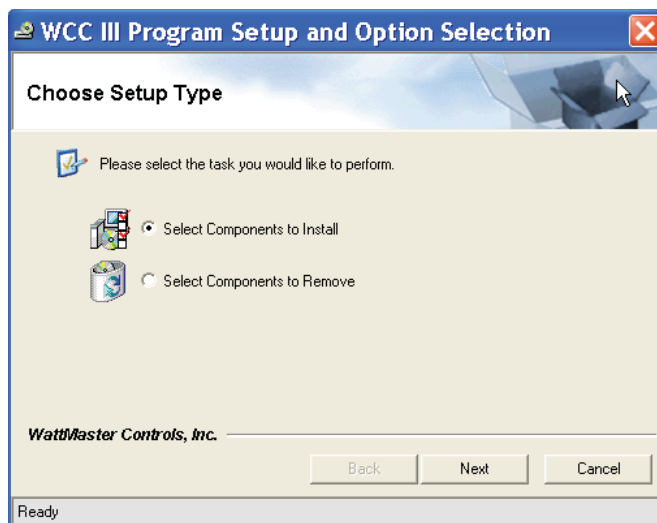
Please note: That there are two possible ways of installing the Tenant Override software—from the main WCC III installation CD installation disk – WM part # DM1WC011-01X and from the Standalone Tenant Override CD installation disk – WM part # DM1WC013-01X. The WM part # denotes the software version for the installation CD and is typically A to Z. The standalone version (WM part # DM1WC013-01X) allows the Building Contractor or build management company to distribute this Tenant Override Installation software to the end user/tenant for unassisted overrides.

### WCC III Installation Software - DM1WC011-01X

Please note: Your user name must have sufficient rights to install these WCC III programs onto your computer's hard drive.

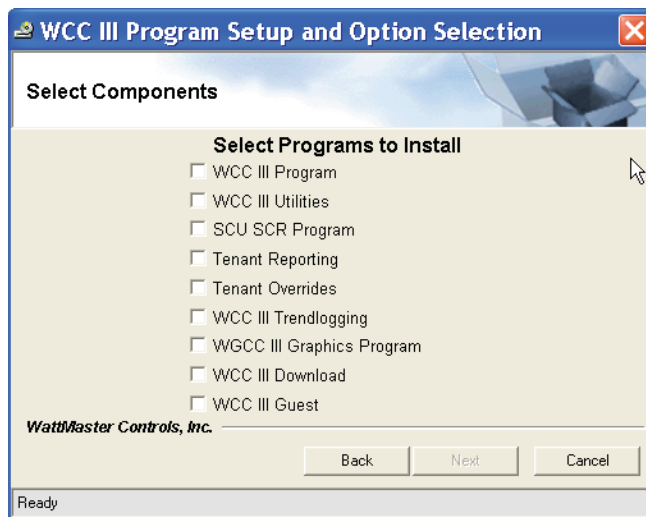
Step 1: Insert the WCC III Program Setup CD (DM1WC011-01X) into your computer's CDROM/DVD drive.

Step 2: This disk should "autorun" and start the installation process and then display the *WCC III Program Setup and Option Selection Screen*. The *WCC III Program Setup and Option Selection Screen* will allow you to select the installation or removal of the various WCC III component programs on to the WCC III front end computer's hard drive.



Step 3: Choose either "Select Components to Install" and click <Next> to continue with the WCC III program installation or choose "Select Components to Remove" and click <Next> to continue with the WCC III program removal process.

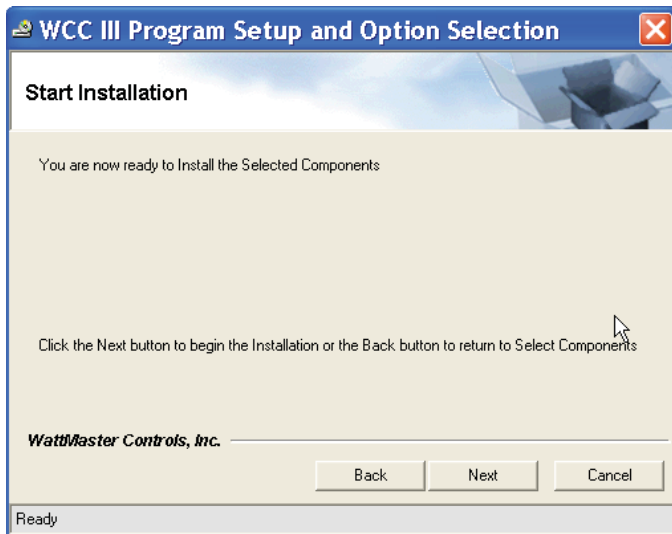
The <Back> button will take you back one screen and the <Cancel> button will allow you to cancel the WCC III Program Setup installation. The instructions that follow describe the installation process. The removal process closely follows the installation procedure, but instead of installing the various WCC III component programs, it will uninstall them.



Step 4: Select the desired check boxes to the left of the Tenant Override programs and any other programs you wish to install and then click <Next> to continue with the installation of these program(s) onto the WCC III Front end computer's hard drive.

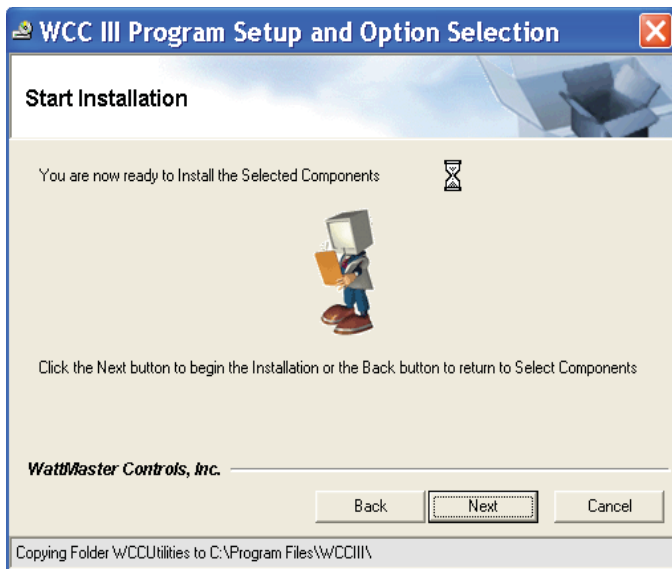
## 6. TENANT OVERRIDE PROGRAM

### Installing the Program



Step 5: The screen will ask you to click the <Next> button to begin installation. After again verifying that you really want to install these WCC III programs, *click <Next>*.

The <Back> button will take you back one screen and the <Cancel> button will allow you to cancel the WCC III Program Setup installation.



Step 6: The mouse cursor will turn to an hourglass-shaped cursor to indicate that the WCC III installation process is still continuing. The “Ready” field at the bottom of this screen will show the progress of the WCC III programs that were selected for installation. (Copying various subdirectories and files). The WCC III installation program will create (or copy over existing subdirectories) the following subdirectories on the WCC III Front end computer’s local disk C:\

ProgramFiles\WCCIII subdirector(ies), depending on the selected programs to be installed. Listed below is only the Tenant Override subdirectory:

C:\ProgramFiles\WCCIII\Tenant OVR\

The <Back> button should take you back one screen, but at this point it is too late in the installation process to go back one screen.

The <Cancel> button should allow you to cancel the WCC III Program Setup installation, but at this point it is too late to cancel the installation process.



Step 7: After the installation is complete, the screen shown above will be displayed. Please *left-click* the <Finish> button to exit the WCC III program setup installation process.

The shortcut icon below and other icons should now be on your Windows Desktop screen, depending on your WCC III program installation selections:

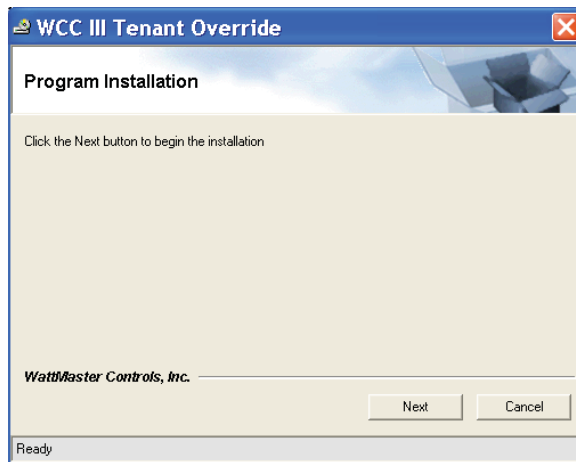


## WCC III Tenant Override Installation Software - DM1WC013-01X

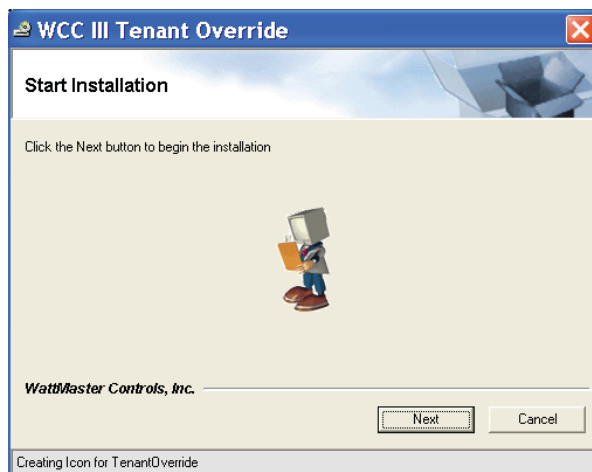
Please note: Your user name must have sufficient rights to install the WCC III Tenant Override Program onto your computer's hard drive.

Step 1: Insert the WCC III Tenant Override Program Setup CD (DM1WC013-01X) into your computer's CDROM/DVD drive.

Step 2: This disk should "autorun" and start the installation process and then display the *WCC III Tenant Override Program Installation Screen*.



Step 3: Click <Next> to continue with the program installation. The <Cancel> button will allow you to cancel the WCC III Tenant Override program installation.



Step 4: The mouse cursor will turn to an hourglass-shaped cursor to indicate that the WCC III Tenant Override installation process is still continuing. The "Ready" field at the bottom of this screen will show the progress of the WCC III Tenant Override program that was selected for installation. The WCC III Tenant Override installation program will create (or copy over existing subdirectories) the following subdirectory on the end user customer computer's local disk: C:\ProgramFiles\WCCIII\TenantOverride.

The <Cancel> button should allow you to cancel the WCC III Program Setup installation, but at this point it is too late to cancel the installation process.



Step 5: After the installation is complete, the screen shown above will be displayed. Please *left-click* the <Finish> button to exit the WCC III Tenant Override program installation process.

There should now be a Tenant Override shortcut icon on your Windows Desktop screen.



## 6. TENANT OVERRIDE PROGRAM

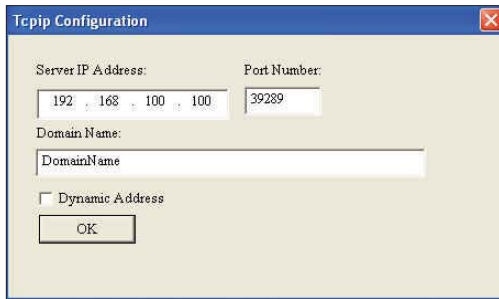
### Running the Program

#### How to Start or Run the TenantOverride.exe Program (SS5024)

The TenantOverride.exe shortcut icon should have been installed on your WCC III Front end computer desktop using either the WCC III Installation Software CD (Part # DM1WC011-01X) or the WCC III Tenant Override Installation Software CD (Part # DM1WC013-01X). To start the TenantOverride.exe program, double click the left mouse button on the Shortcut Icon on the Windows desktop.



After a short period of time, and this time period is dependent upon the CPU speed of your Windows-based computer and the speed of your IP connection to the internet, the *Tenant Override Connection Dialog Box* will appear.



#### Server IP Address:

This is the static IP address of the WCC III – MCD. An IP Address is like a phone number on the world wide web. The IP address for the WCC III – MCD must be Static (does not change) as opposed to Dynamic (constantly changing). This static IP address must be provided by your internet service provider. (A static IP address is the preferred IP connection method for the WCC III system to function.) If you actually know the static IP address of the WCC III – MCD that you wish to connect to, please enter it here in the Server IP Address field.

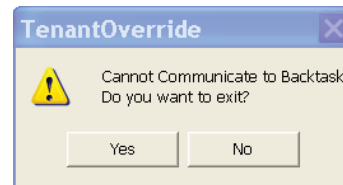
You can use a Dynamic IP Address with the WCC III – MCD, but you must then have what is called a static “Host Name”. This static “Host name” must then be provided by your internet service provider and is limited to 58 total characters.

#### Port Number:

The TenantOverride.exe program opens a two-way, secure communications port that then allows for communication between WCC III – MCD and the TenantOverride.exe program that is running on the WCC III Front end computer. This IP Address

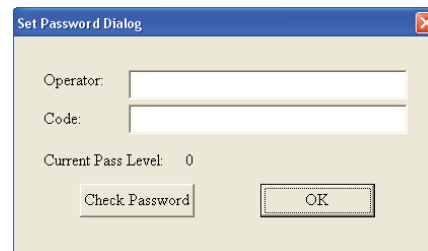
connection is done on a higher address port number than normal (WCC III connection is port number 39289) to help reduce the risk of computer hacking.

By *selecting* <OK>, the TenantOverride.exe program will now start to connect to the selected WCC III – MCD via this selected IP address connection. It should bring up the Tenant Override Set Password Dialog Screen within a new window. If the IP address connection fails to connect to the WCC III – MCD, then another small dialog box window will appear. This is the Cannot Communicate to Backtask Dialog Box.



If you *click* <Yes>, you will exit the TenantOverride.exe program. You will have to figure out why you cannot connect to the WCC III – MCD via the IP address connection.

If you *click* <No>, you will not exit the Tenant Override.exe program, but instead you will be connected to the *Tenant Override Set Password Dialog Screen* within a new window. This connection to the *Tenant Override Set Password Dialog Screen* is not an actual IP connection, but rather a “dummy” Tenant Override Set Password Dialog screen. Once you *click* <OK>, you will be connected to the *WCC III Tenant Override Screen*. This connection to the WCC III - MCD is not an actual IP connection, but rather a “dummy” Tenant Override Screen with no values. This “dummy” Tenant Override Screen will allow you to view and see what the actual TenantOverride.exe screen will look like – minus any data.



In the *Set Password Dialog Screen*, enter an “Operator:” identification and a “Code:” or password equal to at least a pass level 0 that has been previously set up on the *WCCIII System Parameter – Operator Code Screen*. (See the Operator Code Screen of the System Parameter Screen in Section 3 for information on setting up Operator Codes.) *Click* <Check Password>. If the “Current Pass Level:” stays at 0 or higher (1, 2, or 3), then *click* <OK>. By *selecting* <OK>, the Tenant Override.exe program will now start to connect to the selected WCC III – MCD via this selected IP address connection. It should bring up the *Tenant Override Screen* within a new window. If the “Current Pass Level:” changes to –1 then you do not have access to the WCCIII – MCD. If you do not

have access to the WCCIII – MCD and you *click* <OK> then this connection to the Tenant Override.exe program is not an actual IP connection, but rather a “dummy” Tenant Override screen window with no values.

## Tenant Override Request

The *Tenant Override Request Screen* is a simple to use interface screen that allows the end user to override predefined control points with in the WCC III system. The WCC III System can keep track of the override periods and that generally allows for after hours tenant billing of the used equipment.

### Access Code

This is a numerical password for individuals to use to gain access to override control points on the WCC III system.

### Personal Code

This is a secondary numerical password for individuals to use to gain access to override control points on the WCC III system.

### The Tenant Button

The <Tenant> button is used to bring back text information from the WCC III – MCD concerning the Office Description and Tenant Name, provided that they were programmed into the *WCC III Tenant Override Setup Screen* by the Controls Contractor and/or the building management company.

### Selecting an Override

An override is accomplished by selecting the check box that is located next to the desired override group and then clicking <OK>.

There are three possible selectable overrides: Override Light Group, Override Heat Group, and Override A/C Group. These overrides must first be pre-programmed by the Controls Contractor and/or the building management company to override the desired WCC III control point(s). Each Override Group can override a single WCC III control point or up to five WCC III control points with this Tenant Override program.

### Override Hour

There is but one duration time for the all three overrides on this screen.

If you wanted to override the A/C group for 4 hours and the Light Group for 6 hours, it is possible. First you would log into the Tenant Override program with the correct Access Code and Personal Code and then select the Override A/C group check box with a time duration for 4 hours in the Override Hour Time box. You would then select the <OK> button to active the Override A/C Group and then exit the WCC III Tenant Override program. Then you would immediately log in again to the Tenant Override program with the correct Access Code and Personal Code and then select the Override Light Group check box with a time duration for 6 hours in the Override Hour Time box, select <OK> to active the Override Light Group and then exit the WCC III Tenant Override program.

### Tenant Override Error Message Window

If you incorrectly enter a non-valid number in any of the available fields on the Tenant Override Screen, this message would be displayed.

## 6. TENANT OVERRIDE PROGRAM

---

Notes

---